

# Summary Report

## Three Days' Online Training Programme "Man-made Disasters and Women as Responders Since Independence"

Dates: 23-25 February, 2022



Jointly Organized by  
Department of Geography, Aditi Mahavidyalaya, University of Delhi  
Auchandi Road, Bawana, Delhi-110039  
&  
National Institute of Disaster Management(NIDM)  
Ministry of Home Affairs, Government of India

# Contents

1. Introduction to the Course
  - Sub Themes
  - Objectives
2. About Aditi Mahavidyalaya, University of Delhi
3. About National Institute of Disaster Management
4. Day – Wise Summary
  - Day 1
  - Day 2
  - Day 3
  - Key Takeaways
5. Annexure
  - Agenda of Training Programme
  - Flyer of the Training Programme
  - Attendance of the Participants

## **Introduction to the Course**

In many countries of the world, women are more likely to be numbered amongst the poor, landless, and malnourished, and these existing vulnerabilities are enhanced in wake of tragedy. Incidentally, disaster records suggest that the effect and impact of disasters vary for men and women and women are more likely to die and suffer ill health as a result. Women are especially hard-hit by the social impacts of environmental disasters. Disasters have had an impact on the lives of women all around the world but their central role in an aftermath is grossly neglected.

Disasters do not discriminate between genders, but the women have fewer resources and are more likely to be vulnerable and face disaster-related problems. There are different sets of sociopolitical factors exist within society even in a pre disaster scenario and cause deep rooted vulnerability among women. Women are disasters and conflict situations are often the most vulnerable group because of the social fabric of our societies. Vulnerabilities among women prior to a disaster play a dominant role in determining the impacts of disasters not only on them but the others as well in connection. Women's vulnerabilities are more associated to their lower socioeconomic status in society. Women usually do not hold property or land rights, have less political say, fewer educational opportunities, and less mobility due to cultural restrictions accentuate their vulnerability further. The cultural practices, biological conditions, and the sociopolitical environment all add to women's vulnerability and limit their capabilities and strengths to exercise meaningful role in disaster risk reduction strategies despite of the fact that they are not only responders but key decision-maker. Therefore, post-disaster or post-conflict situations hold women back from a faster rate of recovery and from regaining their confidence.

The matter of fact is that the strength of women is not seen as a part of the pack of mainstream strategies where women leading disaster programming is a need. Women as frontline overseer in disaster response need support to deal with the dual demands of managing household responsibilities and working as community volunteer with other survivors is underestimated. Care of women as a family unit and developing support networks around women would make disaster response more gender sensitive and empowering. It implies the need of women's active participation in community development, decision-making processes, management of natural resources, and leading peace building initiatives are important steps towards achieving disaster risk reduction strategies.

The training programme is jointly organized by the Aditi Mahavidyalaya, University of Delhi, Delhi and National Institute of Disaster Management (NIDM), Ministry of Home Affairs, Govt. of India.

**Sub-themes:**

- a) Women, Gender and Disaster: Gendered Nature of Disasters
- b) Women, Disaster and Data
- c) Women, Femininity and Disaster
- d) Women and Their Vulnerabilities
- e) Women Role and Disaster Risk Reduction
- f) Women, Risk and Resilience
- g) Women Sensitive Disaster Management
- h) Women's need Women's right in Disaster

**Objectives:**

- 1) To explain the concept and process of gender, and the influence of social, economic, political and environmental factors during the disaster.
- 2) To develop an understanding, on women as first responders to disasters among the participants.
- 3) To develop an understanding of disasters: man-made, natural and cosmic.
- 4) To build resilience and promoting sustainable development by eliminating gender disparity.
- 5) To develop network among women for active role in planning and decision making.

**About Aditi Mahavidyalaya (University Of Delhi)**

Aditi Mahavidyalaya was established in 1994 and since over two decades has been a pioneering institution in bringing higher education to women students. Aditi Mahavidyalaya believes in bringing diversity in college education and hence recognizes and fosters the capacities and capabilities of the students coming from different socio-cultural and educational milieu. The college plays a dynamic role in bringing women empowerment to the marginalized women population of rural outskirts of Delhi. The institution offers well designed honours and

professional courses to make the students confident, skillful and self-reliant. Apart from these courses, students are motivated to participate in various co-curricular activities for their personality enhancement.

In its glorious 25 years, Aditi Mahavidyalaya has grown not only in size but has also catered to the needs of society for higher education and high social values. The college is committed to academic excellence and values humanism. We empower our students for self governance, participation and encourage an overall personality development. Energy and vitality for college activities comes from a collective sense of purpose, comradeship and social solidarity. It is a matter of great satisfaction and pride that Aditi Mahavidyalaya has grown not only in size but has also catered to the needs of the society for higher education and fine social values

#### **About National Institute of Disaster Management (NIDM)**

National Institute of Disaster Management, Ministry of Home Affairs, Government of India, is the premier institute and statutory body under Disaster Management Act, 2005 for training, research, awareness and capacity building in the field of disaster mitigation and management in the region. The institute lays emphasis on multi-stakeholder interdisciplinary cross- sectoral approach for an effective and efficient pro-active continuum disaster risk management based on participatory integrated multi hazard risk management concept. The Institute believes that disaster risk reduction is possible only through promotion of a "Culture of Prevention" involving all stakeholders. The vision of the institute is to create a Disaster Resilient India by building the capacity at all levels for disaster prevention and preparedness.

## DAY-WISE SUMMARY

Three -Days Online Training Programme on  
**“Man-made disasters and women as responders since Independence”**  
(Date- 23<sup>th</sup>to 25<sup>th</sup> February, 2022 Time - 02:30 PM- 05:00 PM)

DAY 1: 23rd February, 2022

Inaugurating the session Dr. Roshani Devi, Assistant Professor, Aditi Mahavidyalaya welcomed the speakers and participants to the programme with an introduction to eminent experts from various fields. She added that the fact that Disasters amplify the inequitable aspects of the world we live in.

She highlighted that it is not the gender differences that put women at risk, but rather, the gender inequalities that are already pre existing in society. It is urge through the forum that “women are key to a society’s social fabric and hence, its capacity for resilience”.

The programme included eminent speakers- Prof. Anil K Gupta Head ECDRM, NIDM, New Delhi; Prof. Mamta Sharma, Principal, Aditi Mahavidyalaya, Prof. Punyatoya Patra, Head, Department of Geography, Aditi Mahavidyalaya, University of Delhi and esteemed Chief Guest, Prof S.C Rai, Head, Department of Geography, Delhi School of Economics, University of Delhi and Prof. Ravi Parkash Tekchandani, Dean, Promotions and Recruitment, University of Delhi

The conveyor of the session professor Prof Anil Kumar Gupta, Head ECDRM, NIDM, New Delhi expressed that nature do not give birth to disasters, else there are hazards in natural environment. Hazard turns into a disaster mainly due to human interventions. He advocated the phrase that Disasters occurs when hazards meet vulnerability. He cited few disasters to show how the women are vulnerable in face of disasters because of their pre existing societal conditioning from Bhopal Gas Tragedy and Uttarakhand Floods to reveal gender the gender issues. He also highlighted the agenda no.7 out of 10 in Disaster Management, which focused on special care of ‘Women’s leadership and greater involvement’.



## COURSE DIRECTOR, NIDM



**PROF. ANIL K GUPTA**

HEAD, ECDRM DIVISION, NIDM, MHA  
GOVERNMENT OF INDIA

- Anil K Gupta is a professor and head of **Environment and Climate Disaster Risk Management** department, NIDM.
- He is a sustainability - risk management strategist working in the area of disaster management, environment and climate resilience for more than 25 years with **National, Sub-National and Business Administrations.**
- He is looking after various **international and national projects of policy research - planning and capacity building.**

Sharing his views he thanked the organizers and expressed that the discourse would be beneficial in strengthening a leadership role of women in disaster risk reduction. This will formulate a way to work together in bringing about a change on ground.

**Professor Mamta Sharma**, Principal, Aditi Mahavidyalaya delivered a short speech on gender equality. According to her, gender equality in disaster management refers to the analyzing of how the gender differences and gaps in terms of the access to the political, economic and social resources. She focused on the fact that disasters are not gender-neutral, they can affect women and girls disproportionately due to their gender inequalities caused by the socio-economic conditions, cultural beliefs and traditional practices. She emphasized that men and women have different experiences with disasters and their resilience to hazards differs. Later on, she again congratulated department of Geography for organizing this program in collaboration with NIDM as it would be very helpful in promoting gender equality in disaster management and it has paved a way for extended activities to support women empowerment and to raise awareness of the inter-sectionality with other identities.



**PROF. MAMTA SHARMA**

- Professor Mamta Sharma has completed her **MSc. in Chemistry from Miranda house, DU** and secured **3rd position with recipient of " Science Meritorious Award" in 1990.**
- Chairperson for FDP jointly organized by Aditi Mahavidyalaya and Mahatma Hans Raj Faculty Development centre, Hansraj College, University of Delhi, on "NEP 2020: Implication and Challenges" organized in Sept. 2021.
- She was felicitated by **Honoural Minister of Human Resource Development Shri Ramesh Pokhriyal** on 06th March, 2020 on occasion of International Women's Day.
- She received **Certificate of Honour from Prof Rejendrakumar Anayath**, Vice Chancellor, DCRUST University, Murthal for remarkable contribution in the field of **Disaster Preparedness and Sustainable Development** at various levels on 21st January, 2020 at Swami Shradhdhanand College, University of Delhi.
- She received **"Icon of Higher Education Award-2019"** by International Development Center Foundation from Rajya Sabha MP Shri Vijay Singh Tomar at India International Centre on 20th December, 2019.
- She received **"Outstanding Educator of the Year Award"** from Viklang Sahara Samiti Delhi for service towards Persons with Disability sector on 15th December, 2019, Aditi Mahavidyalaya, University of Delhi.
- Honored by Medicines Sans Frontiers and Umeed Ki Kiran on occasion of International Women's Day 2018.
- Honored by **International Women's Club** by Czech Ambassador **Mr Milan Hovorka** for remarkable contribution in education to rural girls on 30<sup>th</sup> March, 2017.

**Prof Punyatoya Patra**, Head, Department of Geography, Aditi Mahavidyalaya highlighted that women are more vulnerable than men in the wake of any disasters. She emphasized that with increase of population and technology, man-made disasters are also increasing. She also talked on importance of women's role in managing disasters as leaders the key managers. Disasters will continue to threaten more lives and livelihoods and achieving the SDGs is a distant possibility, if women specifically are being ignored in disaster planning and responses. In the context of the SDGs, while development is a priority concern to end inequalities, man-made disaster is an additional challenge needs considerable focus to ensure gender equity. Women's potential and responsibilities for the development of resilient communities needs to be explored to accelerate the SDGs and reduce gender inequalities in development.



**PROF. PUNYATOYA PATRA**

- She did her Ph. D. in Geography from **Delhi School of Economics** in 2005.
- Ma'am has authored **4 books and many research papers** in journals of national and International repute and chapters in edited books.
- Prof. Punyatoya Patra has received major research projects sponsored by the **University Grants Commission** from 2007-10.
- She has rich experience of being a consultant with premier organizations such as **ONGC, Atomic Mineral Division, GOI, CRISIL Risk & Infrastructure Solution Pvt. Ltd.** and so on.
- She has been honored as the **Associate Fellow at Indian Institute of Advance Study**, Shimla from 2006 to 2008 for her notable interests in Forest Land Development and Management. She has been conferred with the **Best Lecturer Award by Government** of Delhi in 2011 for her noteworthy involvement in teaching.
- She has also been the recipient of **National and International funding to visit many countries to present her research time to time.**

**Prof. S.C Rai, Head, Department of Geography, Delhi School of Economics** has given the deliberations on disasters in North-East India. He highlighted that North-East India is fragile as well as geologically and geomorphologically active and prone to the earthquakes. He gave an example of Itanagar that building multi-stories are not feasible as soil is not stable and will cause havoc. He further added, man-made disasters are more dangerous than real disasters. Vulnerabilities among women prior to a disaster play a dominant role in determining the impacts of disasters not only on them but the others as well in connection.



## CHIEF GUEST



**PROF. S.C. RAI**

HEAD, DEPARTMENT OF GEOGRAPHY  
DSE-UNIVERSITY OF DELHI

- Prof. S.C.Rai is currently the **Head of Department of Geography, Delhi School of Economics**. He has served on the position of Scientist at G.B. Pant Institute of Himalayan Environment and Sustainable Development (An Autonomous Institute under Ministry of Environment and Forest, Govt. of India), Kosi-Katarmal, Almora (Uttarakhand) from 1992-April 2005.
- Sir has authored books and many research papers in journals of national and International repute and chapters in edited books and awarded for his scientific contribution in his writings and received **"Highly Commended Paper Award-2016" from Willey and Chartered Institution of Water and Environmental Management (CIWEM)**, London, U.K and Received "Honourable Mention Best Paper Award for 1999" by Soil and Water Conservation Society, USA.
- He has been appointed as **National Committee Member to International Geographical Union by Indian National Science Academy**, Ministry of Science and Technology, Government of India.
- Bestowed with **"Life Time Achievement Award, 2019"**, from Land Use Management (CLUIMA), Hyderabad, Telangana during 41 st Indian Geography Congress held at Dr. H.S. Gaur Vishwavidyalaya, Sagar, M.P. on 28 th December 2019.
- He has been awarded with **En-gratis Membership by Ecological Society of America** 1999-2004.
- Sir has been elected as **Vice President, The Asian Geographical Association**, Beijing, China, from August 2019-to July 2023 and **Secretary General of National Association of Geographers**, India Since, 2010 and member of many Board of Research and Advisory Committees across globe.



## CHIEF GUEST



**PROF. RAVI PRAKASH TEKCHANDANI**

DEAN PROMOTIONS & RECRUITMENT  
UNIV. OF DELHI

- Prof. Ravi Prakash Tekchandani is a former director at **National Council for Promotion of Sindhi language** and at **Central Hindi Directorate, MHRD**.
- He is **Ph.d in Sindhi from Delhi University**, M.Com from Lucknow and Diploma in Urdu from University Of Delhi.
- He has contributed in many research work some of which are **Marathi Dalit poetry** and Dr. Ambedkar 's ideology as a post-doctoral.
- He has been awarded with **Literary Honour, Maatri Bhasha Divas Samman** and **Amritlal Nagar Award**. His achievements also includes **Young Sindhi Poet Award, Excellence in Non-Fictional Writing by Govt. of NCT, Delhi and Bhartiya Bhasha Samman, Literary Honour by Sant kanwar ram mission, Ajmer, 2008 Young poet Award by A.B. Sahitya Parishad, Bhopal, 2008 Literary Honour by Sindhi Council of India, Jaipur, 2009 Literary Honour by Vidharbh Sindhi Vikas Parishad, Nagpur – 2011 Literary Honour by Smt. Chandibai College and Ulhas Nagar, 2012**
- Currently, he is member of **Advisory Board, Media Mimansa, MCU, Bhopal**.
- Some of his published books are **Sindhi Lok Manyataon avam Sahitya Mein Ramayan, Sindhi Pahaka: Bhasha Vigyanik, Samajik ain Sanskritik Abhyasu , Saryu Se Sindhu** and **Sindhi Sahitya: Vividh Nibandh** (Under Print).

The inauguration ceremony was closed with the vote of thanks presented by Dr. Shadab Khan, Assistant Professor, Aditi Mahavidyalaya, University of Delhi. The First day of the online training programme was focused on agenda of “Gender and Disasters”.

**Prof. S. Mohapatra**, Department of Geography, IGNOU has emphasized that every disaster is manmade nowadays Men and women, boys and girls, are affected differently from disaster even if they live in same household. He also focused on the sendai framework and gender. He then outlined the efforts at national level and vulnerability of India to many disasters. He classified his deliberations in parts- women do not construct homogenous groups, intersectionality in gender analysis, experiences from fields, gender mainstreaming and disaster risk reduction and four traditions of geography discipline fitting into disaster studies.

Zoom Meeting

You are viewing Subhankar Mohapatra's screen

View Options

Recording LIVE on Custom Live Streaming Service

## National Disaster Management since Independence

- There was no plan either at state level or at national level.
- National Disaster Management Plan came into existence after three very extreme disaster events namely Super Cyclone 1999 in Odisha, Bhuj Earthquake in 2001 and Tsunami in 2004 affecting southern India.
- National Disaster Management Plan was enacted in the year 2005 and institutional and governance mechanism was formulated. Institutions namely NDMA, SDMA, NIDM, NDRF etc. was created.

Click to join audio

Join Audio Start Video

Participants Chat Share Screen Record Reactions

Leave

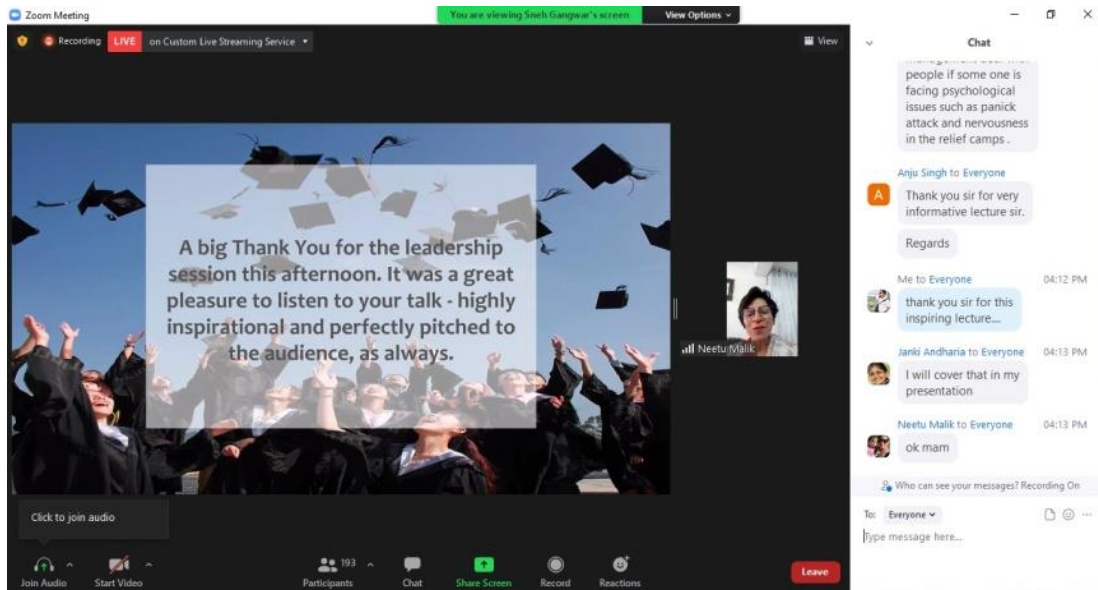
Subhankar Mohapatra

Shadab Khan

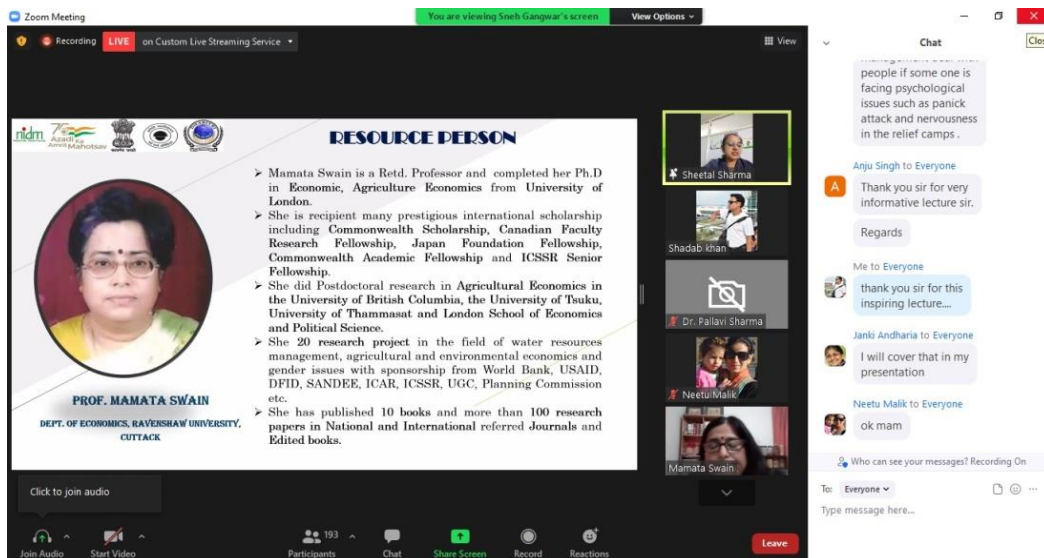
Dr. Pallavi Sharma

Sneha Gangwar

srishti mena

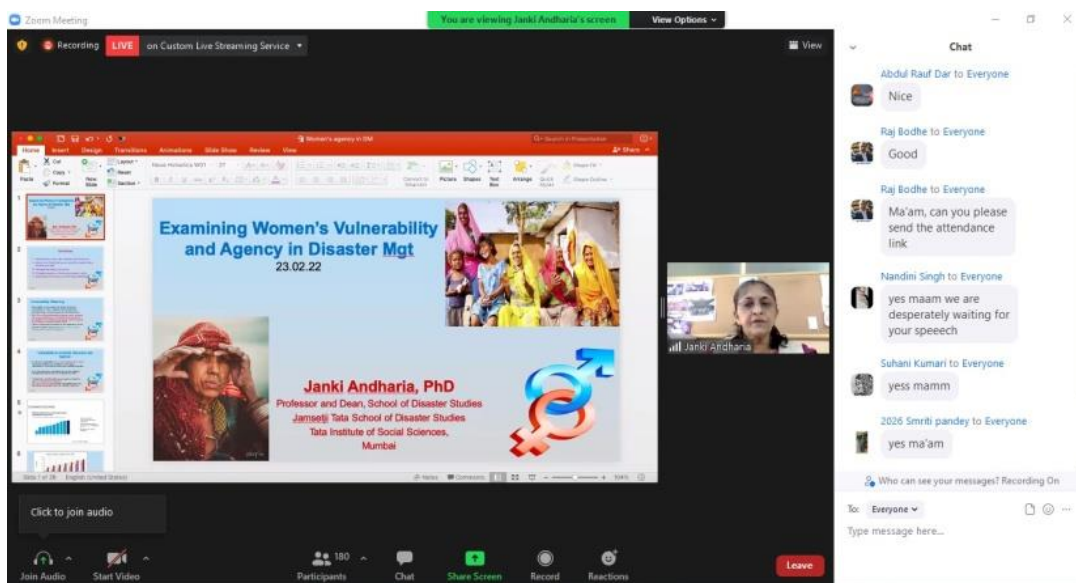


**Prof. Mamata Swain**, Department of Economics, Ravenshaw University has started with meaning and types of disaster as basic understanding. She highlighted upon the major causes of disaster and then delves towards gender perspective in disaster. Her discourse highlighted why women are more vulnerable to disasters and the impact of disaster on them economically, Socially, Culturally and psychologically. She concluded her talk by positive note that destructive forces do create opportunities for them as agents of change and readdress gender disparities prevalent in the societies.





**Prof Janki Andheria**, Dean, Tata School of Disaster Studies, Jemsetji, Tata Institute of Social Sciences has begun with deeper insights on the concept of Vulnerability which is multidimensional and that it is universal, discursive and material. She also talked on the negotiated and dynamic nature of vulnerability and added disproportionate burdens of disaster impact on women, girl children and gender minorities. She pointed out that disaster risk cannot be mitigated in a gender-blind manner.






## DAY 2: 24<sup>th</sup> February, 2022


The second day of the online training programme was focused on “Legal Framework and Policy Implications” related to disasters.

**Mr. Bibhuti Bhushan Gadnayak**, Senior Technical Advisor, UNDP, has highlighted various types and causes of vulnerability faced by women of Asia and Africa. He shared case-studies from India, Africa and Caribbean islands related to women empowerment. He also touched up various aspects related to disaster management and women empowerment such as global commitments of different agencies and India’ s commitment with special reference to PM 10 Point Agenda.

Recording




## Resource Person



**MR. BIBHUTI BHUSHAN GADNAYAK**  
Senior Technical Advisor  
DRM & Emergency UNDP

- Mr. Bibhuti Bhushan Gadanayak is a *Senior Technical Advisor*, Disaster Risk Management & Emergency United Nations Development Programme (UNDP)-Ministry In-Charge of Emergency Management (**MINEMA**), Government of Rwanda, Rwanda.
- He has pursued his *master's degree in Disaster Preparedness, Mitigation and Management from Asian Institute of Technology (AIT), Thailand*, and he also has a *master's degree in Social Work from Utkal University*. He has done his *M. Phil from Central Institute of Psychiatry, Ranchi, Jharkhand, India*.
- Prior to his current designation, Mr. Gadanayak has worked as *Education in Emergency Coordinator*, UNICEF, Barbados, *ECA, DRR & CCA Coordinator*, UNICEF, Guwahati, India, *Disaster Risk Reduction & Climate Change Adaption Specialist* with UNDP, The Gambia, West Africa, subsequently as *United Nations Disaster Management Team Officer (UNDMT)* with UNDP based at Delhi, India, Programme Officer, UNDP, India etc
- In the recent past, he has drafted the *National Strategy for Disaster Risk Reduction (NSDRR)* for Rwanda, *Comprehensive School Safety Security Policy (CSSSP)* guideline for, Assam, West Bengal in India, Turks & Caicos Islands in ECA, *Child Risk & Impact Analysis (CRIA)* for UNICEF, Niger.
- In addition to his professional achievements, he has contributed in journals, articles among them are; *Asia Pacific Disaster Report 2010 and 2012* by UNESCAP & UNISDR. He has also authored a book titled *"A path to disaster resilient communities"* published by Lambert Academic publishing, Germany.

Your network bandwidth is low



Dr. Manta Arora

Speakers (Realtek High Definition Audio)

0

Zoom Meeting

You are viewing Bibhuti Gadanayak's screen

Recording

## Major natural disasters experienced in India

1. Kerala Flood- 2018
2. Kashmir Flood- 2013
3. Uttarakhand Flood- 2013
4. Tsunami- 2004
5. Gujarat Earthquake- 2001
6. Odisha Super Cyclone- 1999
7. Bengal Famine- 1770.



Your network bandwidth is low



Bibhuti Gadanayak

UNDP

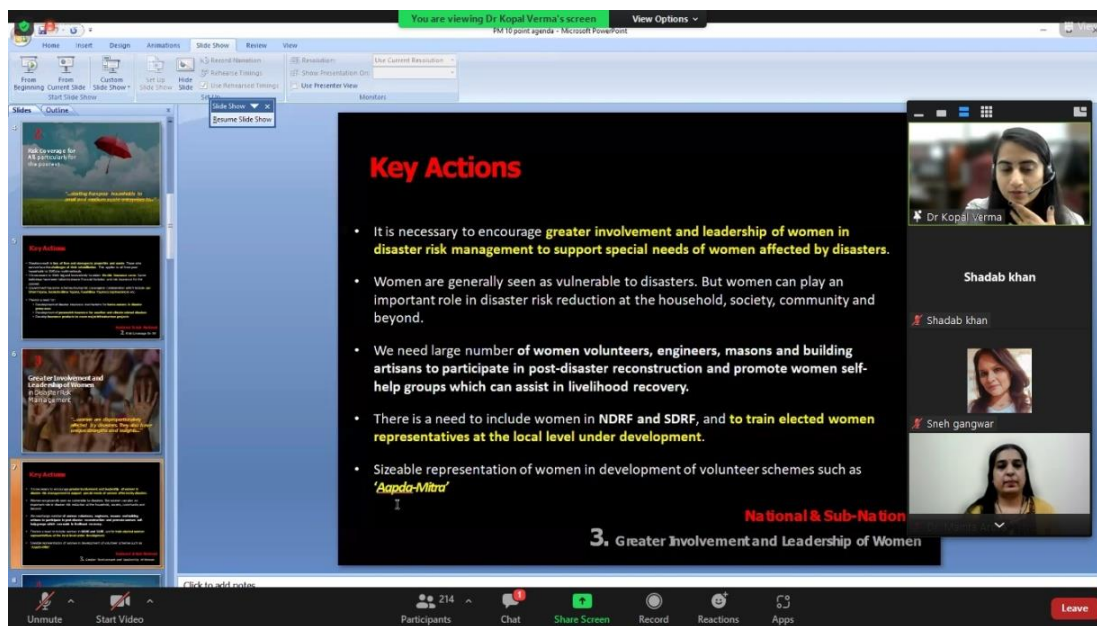
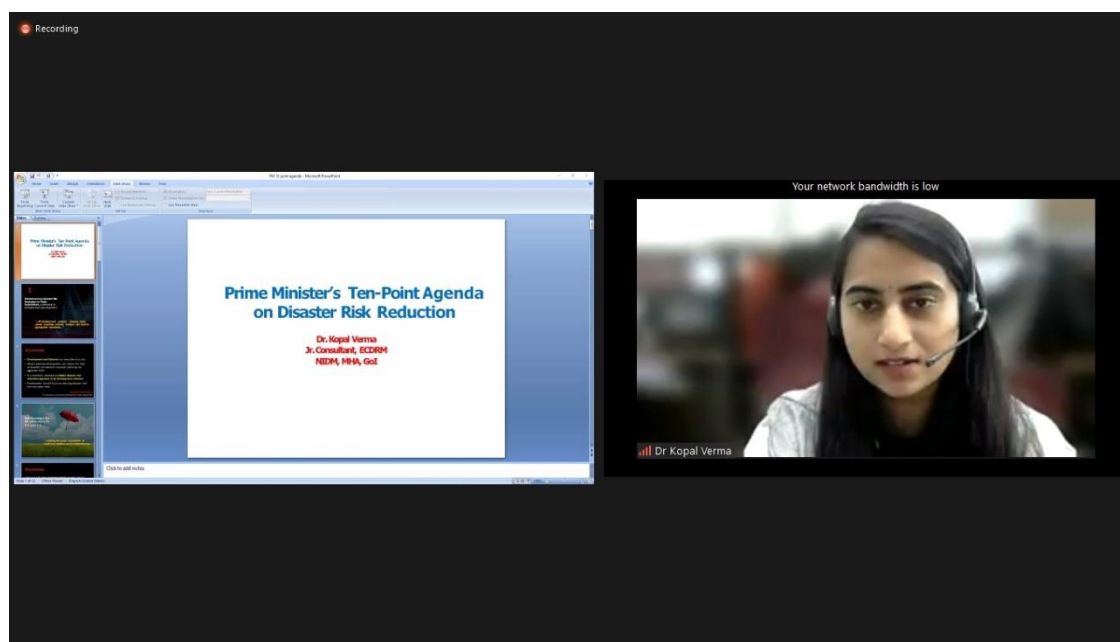
Unmute Start Video

Participants 202 Chat Share Screen Record Reactions Apps

25°C 2:44 PM 2/24/2022

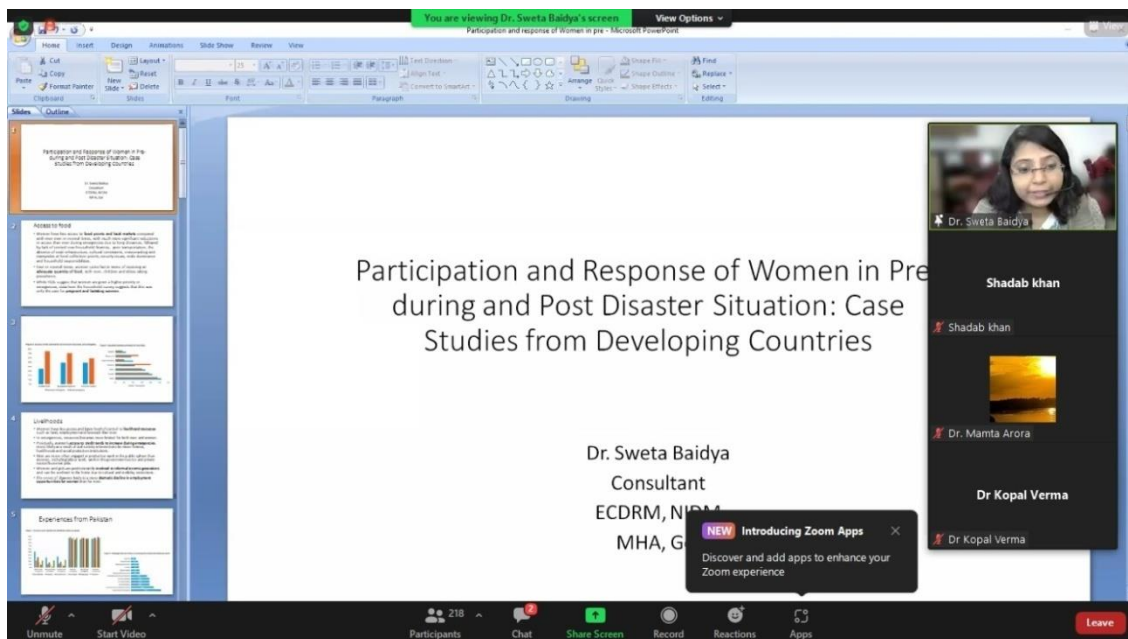
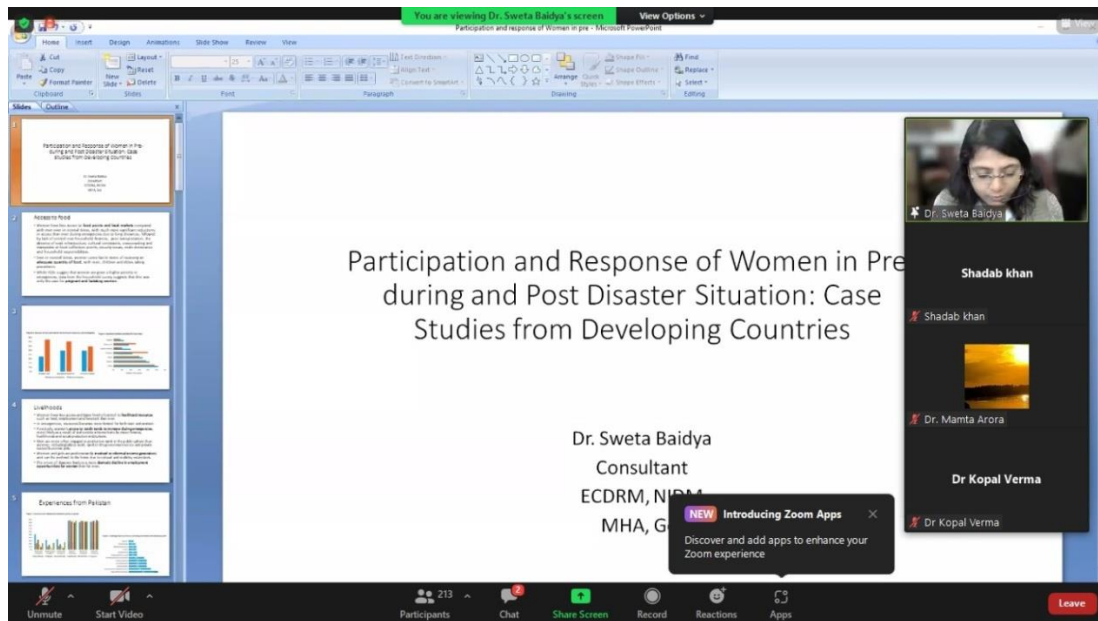
**Dr.Kopal Verma Saini**, Junior Consultant in ECDRM, NIDM presented her views on “Prime Minister 10 Point Agenda”. She has provided deeper insight by elaborating all the 10 points which has enhanced our knowledge. She laid emphasis on greater involvement and leadership of women in disaster risk management to support special needs of women affected by disasters. The fact is that the strength of women is not seen as a part of the pack of mainstream strategies where women leading disaster programming is a need. So we should invest in local capacity building not only from response perspective but disaster risk reduction point of view too. There is need

for systematic post disaster recovery on the basis of lessons learnt from past and greater cohesion to international response to disaster.

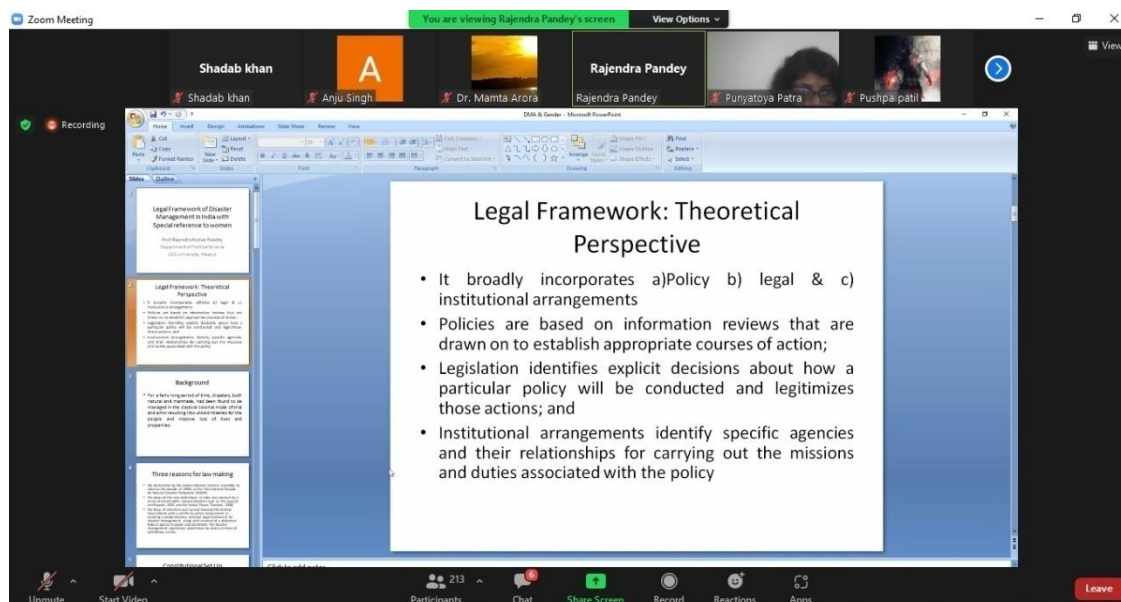


**Dr. Sweta Baidya Das**, Consultant in ECDRM, NIDM shared experience from Pakistan and India and discussed various variables such as access to food, livelihood, hygiene, types of violence, access to education, etc. She laid emphasis on the livelihood generation options for women. As women have less access and lower level of control to livelihood resources such as

land etc than men and affects them negatively in the long run. Access to credit tends to increase during emergencies and face multiple challenges in general and particularly post any disaster. Women are generally involved in informal income generation and there's dramatic decline in employment opportunities for women than men. These conditions overall makes precarious in the wake of disasters.



**Dr. Rajendra K. Pandey**, Professor in the Department of Political Science, Ch. Charan Singh University. He discussed all the aspects ranging from legal framework, its background, reasons for law-making, constitutional set-up, Disaster management Act, Task force and the case studies. He discussed in detail the National Policy on DM 2009 and National Policy on DM 2016 and then highlighted the gender and legal framework in disaster management and raised many valid arguments on women vulnerability and it will be crisis management from despair to hope.



### **DAY 3: 25<sup>th</sup> February, 2022**

The second day of the online training programme was focused on “Women’s Role and Disaster Risk Reduction” related to disasters.

**Dr. Sreeja M.U.**, Hazard Analyst, Kerela State Disaster Management Authority shared her personal experience being a Hazard analyst in Kerela on the Covid-19 pandemic situation. The major women organizations named – ASHA workers, Anganwadi workers and Kudumbashree actively served the people from the public health, caregivers etc. She explained the concept of “Chain Call” where the women who acted as professionals in order to spread the awareness of do’s and don’ts by creating 2.2 million members of Whatsapp groups. She suggested some solutions such as providing proper education, training and equipment handling so they can be prepared.

## Relevance of women responders

### Prime Minister's 10 point Agenda - AMCDRR

Women's leadership and greater involvement should be central to disaster management

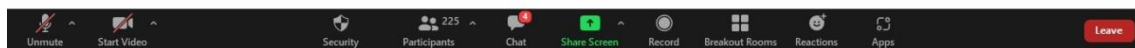
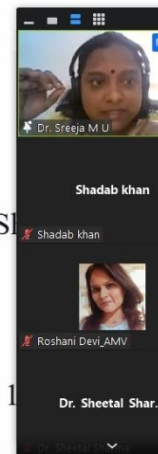
- Need large number of women volunteers, engineers, masons and artisans to participate in post-disaster reconstruction
- Promote women self-help groups which can assist in livelihood reconstruction
- Need to include women in NDRF and SDRF
- Train elected women representatives at the local level under development



## Case Study- COVID 19 management in Kerala

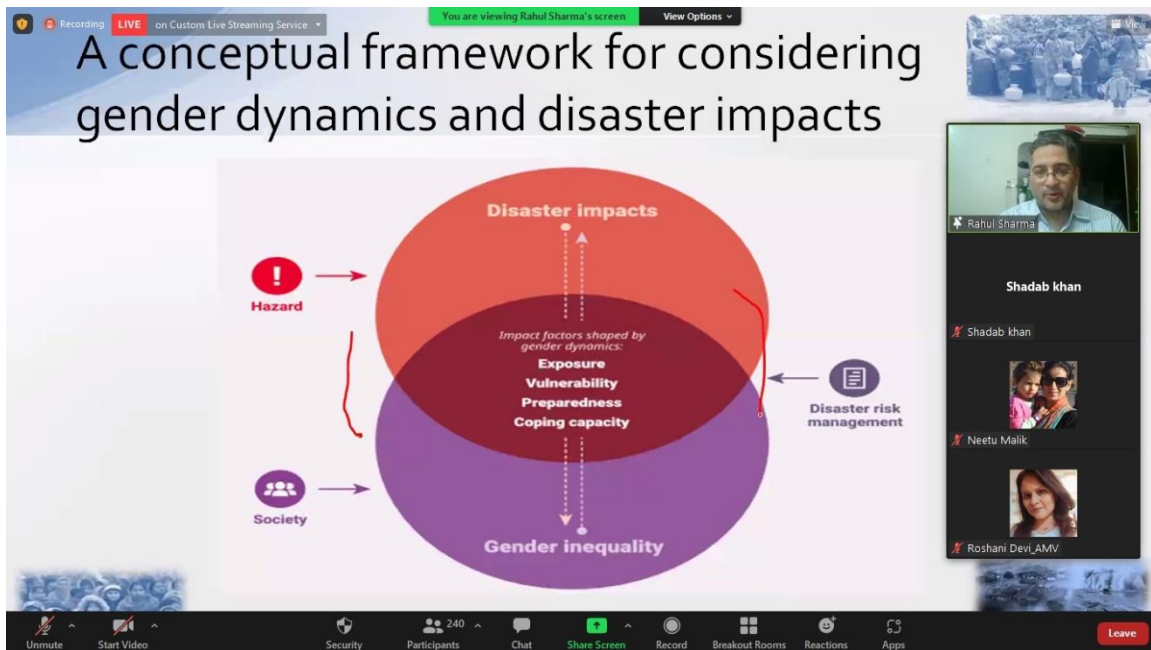
### Public health, caregiving and sanitation

- Department of Health and Family welfare, Kerala led by Ms. K. K. Sreeja
- 8000 nurses and over 5000 junior public health nurses
- Community Kitchen management
- Local Self Government Institutions women elected representatives - 154%



**Prof. Rahul Sharma**, Department of Community Medicine, University College of Medical Sciences, UCMS & GTB Hospital, Delhi began his lecture by providing holistic insights on the concept of Disaster risk reduction and explored the Gender dimensions of disaster, risk and resilience. He further dived into the Primordial, Primary, Secondary and Tertiary levels of

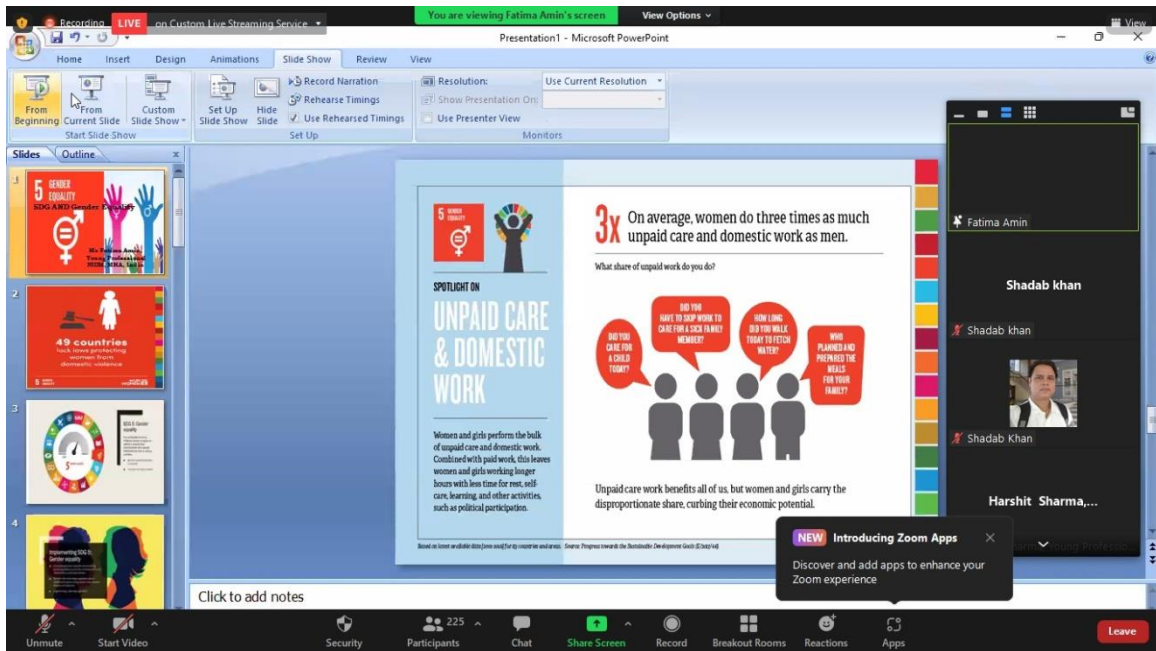
disaster prevention. The concept of risk communication was explored through the prism of the Bhopal gas tragedy. Prof. Rahul Sharma concluded his session with a case study on concern of home maker's (women) regarding disaster and how education, socio - economic class affects their thought process. He quoted "Disaster is gender neutral, its impact is not " which beautifully summarized the essence of his lecture .



**Mr. Harshit Sharma**, Young Professional ECDRM Division, NIDM, MHA,GOI accounted the affects of vulnerability of women in such disaster situations and gave a comparative study of the position of women at international level. He explained the distinct disaster occurred between 2013-2015 including floods, droughts, cyclones, and landslides. He discussed about the major initiatives taken by the government and their consequences. He emphasized on Empower women, empower the human community, the base on which the world stand is a women.



**Ms. Fatima Binte Amin**, young professional, ECDRM, enveloped her talk on sustainable development goals, especially SDG 5 . She threw light on the plight of women at global and state level and addressed the issue of discriminatory laws and how 49 countries still lack laws protecting women from domestic violence, while 39 bar equal inheritance rights for daughters and sons. She expressed her views using statistics on Starting difference in education at primary secondary and higher level , child sex ratio and less involvement of women in panchayats. She focused on the need to recognize unpaid care, equal rights and equal distribution of economic resources. Ms. Fatima shared stark statistics on global intimate partner violence and all the harmful practices women are directly or indirectly subjected to and offered a way forward.



With these presentations planned for day three, the online training programme has reached to its closing ceremony. The concluding remarks presented Prof. Punyatoya Patra, Head, Department of Geography, Aditi Mahavidyalaya. She said that she agrees with all the points raised by eminent speakers and it thinks that it is pertinent to implement the key lessons in future course of

action in disaster risk reduction. Disaster situations are the real test of resiliency of communities and the social system actually test the ability of how to maintain development standards in the long term and points out to alter social structures that go beyond disaster-related work. There is need for more integrated approach in addressing the issues relating disaster, gender and women. She underlined that lot of important points have been brought up in the training with an objective that there's a need of women's active participation in community development, decision-making processes, management of natural resources, and leading peace building initiatives are important steps towards achieving disaster risk reduction strategies. These kind of training discourses play an important role in making people on policy table accepting the existing issues and planning their policies through suggestions and statistics provided in the discourse. She complemented the entire team Aditi Mahavidyalaya on successful conduction of the training programme. She thanked Prof Anil K Gupta and mentioned that overall it has been diverse experience for everyone and the overall aim of exercise was to create awareness about the issue of Role of Women as responders in Disasters with gender manifestations and sustainable development and a nexus of all the three that directly and indirectly affects mankind at large. The training programme ended by an elaborated vote of thanks by Dr, Shadab Khan, Assistant Professor, Department of Geography, Aditi Mahavidyalaya. In the last the team of students presented National Anthem as an end to this three day journey full of vivid and meaningful insights.

### **Key Takeaways**

**Disasters are gender neutral but their impacts are not:** Researchers have found that, “61 percent of fatalities in Myanmar after Cyclone Nargis in 2008, 70 percent after the 2004 Indian Ocean Tsunami in Banda Aceh, and 91 percent after Cyclone Gorky in Bangladesh in 1991” were women. A global study finds that women's mortality from disasters tends to be higher in relation to that of men in countries where women have lower socioeconomic status. When economic and social rights are more equally distributed between men and women, researchers have discovered that the death rates are also more equal.

**Gender Inequality:** The impact of disasters often reflect and reinforce gender inequality. This happens because the conditions driving disasters impacts are influenced by gender dynamics of society. It is not the gender differences that put women at risk, but rather, the gender inequalities

that are already pre existing in society. It is not the characteristics of gender, age, income, race and migrant status that define vulnerability; rather they are the “outcomes of other processes of discrimination and marginalization,” such that women are considered part of a vulnerable group not because they are women, but because “vulnerability lies with the lack of access to the resources that allow people to cope with hazardous events and this access may be gendered”.

**Capacity Building and Women Empowerment:** Building women’s empowerment and including women in disaster planning creates resilience. Women can help identify disaster risks for themselves and for girls that may not be understood by male planners. They can also help build security for their families, including increased income or awareness of personal preparedness and health.

**Active involvement of Women:** Including women in recovery helps reduce stereotypes and discrimination about women’s roles. The UN Volunteers coordinated programs to increase women’s involvement in running of camps; traditionally these are male-dominated spaces. This helped reduce violence and gave women more control over their space. They also helped by designing “small projects aimed at changing traditional gender roles and improving women’s participation, which led to women engaging in non-traditional activities such as cash-for-work initiatives and the removal of debris.” Women also got involved in the construction industry.

**Sustainable Disaster Recovery:** Gender-differentiated impacts of disasters can exacerbate gender inequality, which in turn can worsen resilience to future disasters. Disaster recoveries are opportunities to build back in a way that breaks down the constraints faced by women. Women play an active role in disaster preparedness, response and recovery efforts. Acknowledging and formalizing their participation can have positive results in impacts as well as positive spillover effect on position of women in society.

## Annexure 1 : Agenda

| Date                                                                                        | Session                                                                      | Resource Person                                                                                                                                                                                                                                                                                                                                                                                                                                                                                                                                                                                                                                                                                                                                |
|---------------------------------------------------------------------------------------------|------------------------------------------------------------------------------|------------------------------------------------------------------------------------------------------------------------------------------------------------------------------------------------------------------------------------------------------------------------------------------------------------------------------------------------------------------------------------------------------------------------------------------------------------------------------------------------------------------------------------------------------------------------------------------------------------------------------------------------------------------------------------------------------------------------------------------------|
| <p><b>Day 1</b></p> <p><b>23<sup>rd</sup></b></p> <p><b>February</b></p> <p><b>2022</b></p> | <p><u>Inaugural Session</u></p> <p>2:30pm – 3:00pm</p>                       | <p><b>Shri Taj Hassan, IPS</b><br/>Executive Director, NIDM</p> <p><b>Prof. Anil Kumar Gupta</b><br/>ECDRM Division, NIDM, New Delhi<br/>Thematic Lecture</p> <p><b>Prof. Mamta Sharma</b><br/>Principal, Aditi Mahavidyalaya, University of Delhi</p> <p><b>Prof. Punyatoya Patra</b><br/>Head, Department of Geography, Aditi Mahavidyalaya, University of Delhi.</p> <p><b>Prof. Ravi Prakash Tekchandani</b><br/>Dean, Promotions and Recruitment<br/>University of Delhi</p> <p><b>Prof S.C Rai</b><br/>Head, Department of Geography, Delhi School of Economics, University of Delhi</p> <p><b>Vote of Thanks</b><br/>Dr. Shadab Khan<br/>Assistant Professor, Department of Geography<br/>Aditi Mahavidyalaya, University of Delhi.</p> |
|                                                                                             | <p><b>AGENDA</b></p>                                                         | <p><b>Gender and Disasters</b></p>                                                                                                                                                                                                                                                                                                                                                                                                                                                                                                                                                                                                                                                                                                             |
|                                                                                             | <p><u>Lecture 1</u></p> <p><u>Special address</u></p> <p>3:00pm – 3:35pm</p> | <p><b>Prof. Subhakanta Mohapatra</b><br/>Department of Geography, IGNOU, Delhi<br/>Theme: Why gender matters for making Disaster Resilient Society- Evidence from the Fields</p>                                                                                                                                                                                                                                                                                                                                                                                                                                                                                                                                                               |
|                                                                                             | <p>3:35pm – 3:40pm</p>                                                       | <p>Q&amp;A Session</p>                                                                                                                                                                                                                                                                                                                                                                                                                                                                                                                                                                                                                                                                                                                         |
|                                                                                             | <p><u>Lecture 2</u></p> <p>3:40pm – 4:15pm</p>                               | <p><b>Prof Mamata Swain</b><br/>Rtd from Department of Economics<br/>Ravenshaw University, Cuttack<br/>Theme: Gender Perspective in Disaster Management</p>                                                                                                                                                                                                                                                                                                                                                                                                                                                                                                                                                                                    |
|                                                                                             | <p>4:15pm – 4:20pm</p>                                                       | <p>Q&amp;A Session</p>                                                                                                                                                                                                                                                                                                                                                                                                                                                                                                                                                                                                                                                                                                                         |
|                                                                                             | <p>4:20pm – 4:55pm</p>                                                       | <p><b>Prof Janki Andhria,</b><br/>Jamsetji Tata School of Disaster Studies<br/>Mumbai Campus<br/>Theme: Exploring Women’s Vulnerability and Agency in Disaster Management</p>                                                                                                                                                                                                                                                                                                                                                                                                                                                                                                                                                                  |
|                                                                                             | <p>4:50pm – 5:00pm</p>                                                       | <p>Q&amp;A Session</p>                                                                                                                                                                                                                                                                                                                                                                                                                                                                                                                                                                                                                                                                                                                         |
|                                                                                             | <p><b>AGENDA</b></p>                                                         | <p><b>Legal Framework and Policy Implication</b></p>                                                                                                                                                                                                                                                                                                                                                                                                                                                                                                                                                                                                                                                                                           |

|                                                                              |                                                                                                                                |                                                                                                                                                                                                                                             |
|------------------------------------------------------------------------------|--------------------------------------------------------------------------------------------------------------------------------|---------------------------------------------------------------------------------------------------------------------------------------------------------------------------------------------------------------------------------------------|
| <b>Day 2</b><br><br><b>24<sup>th</sup></b><br><b>February</b><br><b>2022</b> | <u>Lecture 1</u><br>2:30pm – 3:20pm                                                                                            | <b>Mr. Bibhuti Bhushan Gadnayak</b><br>Senior Technical Advisor, DRM & Emergency , UNDP<br>Theme: Role of Women in Disaster Management<br>Experience from Asia and Africa                                                                   |
|                                                                              | 3:20pm – 3:30pm                                                                                                                | Q&A Session                                                                                                                                                                                                                                 |
|                                                                              | <u>Lecture 2</u><br>3:30pm – 3:45pm                                                                                            | <b>Dr. Kopal Verma Saini</b><br>Junior Consultant (Climate Resilience),<br>ECDRM Division, NIDM, Delhi.<br>Theme: PM 10 Point Agenda                                                                                                        |
|                                                                              | <u>Lecture 3</u><br>3:45pm – 4:00pm                                                                                            | <b>Dr. Sweta Baidya Das</b><br>Consultant (Climate Resilience),<br>ECDRM Division, NIDM, Delhi.<br>Theme: Participation and Response of Women in pre,<br>during and post disaster situation: Case Studies from<br>Under Developed Countries |
|                                                                              | 4:00pm – 4:10pm                                                                                                                | Q&A Session                                                                                                                                                                                                                                 |
|                                                                              | <u>Lecture 4</u><br>4:10pm – 4:50pm                                                                                            | <b>Prof Rajendra K. Pandey</b><br>Department of Political Science, CCS University,<br>Meerut<br>Theme: Legal Framework of Disaster Management in<br>India with Special reference to women                                                   |
|                                                                              | 4:50pm – 5:00pm                                                                                                                | Q&A Session                                                                                                                                                                                                                                 |
| <b>Day 3</b><br><br><b>25<sup>th</sup></b><br><b>February</b><br><b>2022</b> | <b>AGENDA</b>                                                                                                                  | <b>Women's Role and Disaster Risk Reduction</b>                                                                                                                                                                                             |
|                                                                              | <u>Lecture 1</u><br>2:30pm – 3:10pm                                                                                            | <b>Dr. Sreeja M U</b><br>Hazard Analyst, Kerala State Disaster Management<br>Authority<br>Theme: Human induced disasters and the role of<br>women as Disaster Management Professionals.                                                     |
|                                                                              | 3:10pm – 3:20pm                                                                                                                | Q&A Session                                                                                                                                                                                                                                 |
|                                                                              | <u>Lecture 2</u><br>3:20pm – 4:00pm                                                                                            | <b>Prof. Rahul Sharma</b><br>Department of Community Medicine, University<br>College of Medical Sciences, UCMS & GTB Hospital,<br>Delhi.<br>Theme: Women in Disaster Risk Reduction - Role of<br>Risk Perception and Beyond                 |
|                                                                              | 4:00pm – 4:10pm                                                                                                                | Q&A Session                                                                                                                                                                                                                                 |
| <u>Lecture 3</u><br>4:10pm- 4:25pm                                           | <b>Mr. Harshit Sharma</b><br>Young Professional, ECDRM Division, NIDM, MHA,<br>GoI<br>Theme: Women's Participation in Disaster |                                                                                                                                                                                                                                             |

|  |                                               |                                                                                                                                                                                                                                                                                                                                                                                 |
|--|-----------------------------------------------|---------------------------------------------------------------------------------------------------------------------------------------------------------------------------------------------------------------------------------------------------------------------------------------------------------------------------------------------------------------------------------|
|  |                                               | Management                                                                                                                                                                                                                                                                                                                                                                      |
|  | <u>Lecture 4</u><br>4:25pm – 4:40pm           | <b>Ms Fatima Binte Amin</b><br>Young Professional, ECDRM Division, NIDM, MHA, GoI<br>Theme: Sustainable Development Goals and Gender Equality                                                                                                                                                                                                                                   |
|  | 4:40pm – 4:50pm                               | Q&A Session                                                                                                                                                                                                                                                                                                                                                                     |
|  | <u>Valedictory Session</u><br>4:50pm – 5:00pm | <u>Closing Remarks:</u> <b>Prof. Anil Kumar Gupta</b><br>ECDRM Division, NIDM, New Delhi<br><u>Concluding Remarks:</u> <b>Prof. Punyatoya Patra</b><br>Head, Department of Geography<br>Aditi Mahavidyalaya , University of Delhi<br><u>Vote of Thanks:</u> <b>Dr. Shadab Khan</b><br>Assistant Professor, Department of Geography<br>Aditi Mahavidyalaya, University of Delhi. |

# Annexure 2: Flyer



Towards a disaster free India...





सत्यमेव जयते





**3-Days Online Training Program On**

## "Man-Made Disasters And Women As Responders Since Independence"

Date- 23-02-2022 to 25-02-2022      Time: 2:30p.m to 5:00p.m

Registration Link :- <https://training.nidm.gov.in/>

**PATRON    COURSE DIRECTOR**




Shri Taj Hassan, IPS  
Executive Director,  
NIDM, MHA, GOI

Prof. (Dr.) Anil K Gupta  
Head, ECDRM Division,  
NIDM, MHA, GOI

**QR-CODE**



**CONVENORS**




Prof. Mamta Sharma  
Principal, Aditi Mahavidyalaya  
University of Delhi

Prof. Punyatoya Patra  
TIC-Geography Department  
Aditi Mahavidyalaya

**CHIEF-GUESTS**




Prof. S.C. Rai  
Head, Department of Geography  
DSE, University of Delhi

Prof. Ravi Prakash Tekchandani  
Dean Promotion & Recruitment  
University of Delhi

**SPEAKERS**



Prof. Janki Anshria  
Jankiji Tata School of Disaster  
Studies, Mumbai Campus



Mr. Bibhuti B. Gainayak  
Senior Technical Advisor  
DRM & Emergency, UNDP



Prof. Rahul Sharma  
Department of Community Medicine  
University College of Medical Sciences,  
Delhi



Prof. Rajendra K. Pandey  
Department of Political Science  
CCS University, Meerut, U.P.



Prof. S. Mohapatra  
Department of Geography  
IGNOU



Prof. Mamata Swain (Htd.)  
Department of Economics  
Ravenshaw University,  
Cuttack



Dr. Sreeja  
Hazard Analyst  
SDMA, Kerala



Dr. Kopal Verma Saini  
Junior Consultant, ECDRM,  
NIDM, MHA, GOI



Dr. Sweta Baidya Das  
Consultant, ECDRM,  
NIDM, MHA, GOI



Ms. Fatima B. Amin  
Young Professional, ECDRM,  
NIDM, MHA, GOI



Mr. Harshit Sharma  
Young Professional, ECDRM,  
NIDM, MHA, GOI



**Stay Protected  
from Corona**



Wear your Mask  
Properly



Follow Proper  
Hand Hygiene



Maintain Social  
Distancing



Get  
Vaccinated

### Annexure 3: List of Participants

| S. No | Name               | Email id                      |
|-------|--------------------|-------------------------------|
| 1     | AARTI SAINI        | aartisaini1303@gmail.com      |
| 2     | AASHI              | ashi.varshney12345@gmail.com  |
| 3     | AASTHA BHARDWAJ    | aasthabhardwaj1501@gmail.com  |
| 4     | AASTHA KUMARI      | goldikumari514@gmail.com      |
| 5     | ABDUL RAUF DAR     | abdulraufdar970@gmail.com     |
| 6     | ABHILASHA ARYAA    | abhilashaarya2001@gmail.com   |
| 7     | ABHWAYA SINHA      | abhwaya@gmail.com             |
| 8     | ADITI BHARTI       | aditibharti007@gmail.com      |
| 9     | ADITI PAL GUPTA    | Aditiguptakhusi2007@gmail.com |
| 10    | AGENT SKY 007      | officialskysharm@gmail.com    |
| 11    | AKANKSHA TYAGI     | tyagiakanksha287@gmail.com    |
| 12    | AKHIL UNNI         | akhilunni321@gmail.com        |
| 13    | AKSHAYJIT PODDER   | chem.akshayjit.aus@gmail.com  |
| 14    | AL MASARA TRAVELS  | almasaratravels09@gmail.com   |
| 15    | AMBIKA YADAV       | ambikayadav200105@gmail.com   |
| 16    | AMISHA SINGH       | amishasingh2816@gmail.com     |
| 17    | AMIT DAS MOHAPATRA | amit.dasmohapatra@gmail.com   |
| 18    | AMRAPALI KUMARI    | amrapaliamrapali37@gmail.com  |
| 19    | AMRIT              | singhalamrit154@gmail.com     |
| 20    | MANSI GUPTA        | mg9130450@gmail.com           |
| 21    | ANANYA             | ananyapandey1803@gmail.com    |
| 22    | ANCHAL             | ankitach673@gmail.com         |
| 23    | ANCHAL YADAV       | anchalyadav557@gmail.com      |
| 24    | ANISHA MASCARENHAS | abhiesh.18242@kvsrodelhi.in   |
| 25    | ANJALI BORKAR      | anjaliorkar2280@gmail.com     |
| 26    | ANJALI VERMA       | anushkascience@gmail.com      |
| 27    | ANJANA KAKKAR      | anjanakakkar19@gmail.com      |
| 28    | ANJU               | anjusktv@gmail.com            |
| 29    | ANJU MAURYA        | sikandrabad860@gmail.com      |
| 30    | ANJU SINGH         | anjusingh.geog@gmail.com      |
| 31    | ANKITA CHOWDHURY   | ankitach673@gmail.com         |
| 32    | ANKITA THAKUR      | thakurankita2001@gmail.com    |
| 33    | ANNU SINGH         | anu76742ej@gmail.com          |
| 34    | ANTARA PAL         | antarapal05@gmail.com         |
| 35    | ANUSHKA            | jaatannu016@gmail.com         |
| 36    | ANUSHKA SINGH      | anushkascience@gmail.com      |
| 37    | ARUNDHATI MOHANTY  | amohanty765@gmail.com         |
| 38    | ARVIND CHAUHAN     | chandreyemitra2101@gmail.com  |

|    |                      |                                                              |
|----|----------------------|--------------------------------------------------------------|
| 39 | ASHA                 | aroracharu2107@gmail.com                                     |
| 40 | ASHA SHARMA          | ashasharma8595@gmail.com                                     |
| 41 | ASHISH GUPTA         | deeksha.mishra2009@gmail.com                                 |
| 42 | AVANTIKA DUBEY       | avantikad66@gmail.com                                        |
| 43 | AYUSHI MISHRA        | choudharydeepti06@gmail.com                                  |
| 44 | BABITA               | Bbbabitakumari995837@gmail.com                               |
| 45 | BHAGYALAKSHMI S      | dikshidas@icloud.com                                         |
| 46 | BHARATI MADHEKAR     | bharti.madhekar@gmail.com                                    |
| 47 | BHARTI               | divithakur8899@gmail.com                                     |
| 48 | BHAWNA BANSAL        | jlgauta@gmail.com                                            |
| 49 | BHUMIKA ATRI         | bhumikaatri22@gmail.com                                      |
| 50 | BIBHUTI GADNAYAK     | kumarg@hku.hk                                                |
| 51 | BIDYALUXMI HIJAM     | hijambidyaluxmi@gmail.com                                    |
| 52 | CHANDAN KHARWAR      | imb2021015@iiita.ac.in                                       |
| 53 | CHANDANI SINGH       | chandanisinghbps@gmail.com                                   |
| 54 | CHANDREYEE MITRA     | nehaarora.geo@gmail.com                                      |
| 55 | CHARU ARORA          | aroracharu2107@gmail.com                                     |
| 56 | CIVIL DEFENCE PUNJAB | hs.civildefence@gmail.com                                    |
| 57 | DEEKSHA              | diksha.jagtap0922@gmail.com                                  |
| 58 | DEEKSHA MISHRA       | Deeksha.mishra2009@gmail.com                                 |
| 59 | AYANSHI CHAHAR       | guest239@bakliwaltutorials.com                               |
| 60 | DEEPANSHI SIMAR      | Simardeepanshi1@gmail.com                                    |
| 61 | DEEPTI CHOUDHARY     | choudharydeepti06@gmail.com                                  |
| 62 | DEVASHREE            | ydevashree2104@gmail.com                                     |
| 63 | DIKSHA JAGTAP        | hemlatasingh630@gmail.com                                    |
| 64 | DIKSHA SAINI         | ishmalik29@gmail.com                                         |
| 65 | DIKSHI DAS           | dikshidas@icloud.com                                         |
| 66 | DIVYA MANN           | divyamann96@gmail.com                                        |
| 67 | DIVYA PAL            | palanjali642@gmail.com                                       |
| 68 | DIVYA SAINI          | divyasaini21@gmail.com                                       |
| 69 | DIVYA SEHRAWAT       | sehrawatdivya788@gmail.com                                   |
| 70 | DIYA JALAL           | divithakur8899@gmail.com                                     |
| 71 | DR J L GAUTAM        | jlgauta@gmail.com                                            |
| 72 | DR. KOPAL VERMA      | jk11091999@gmail.com                                         |
| 73 | DR. KUMAR GANESAN    | kajalverma14089@gmail.com                                    |
| 74 | DR. MOHAMMED OSAMA   | osama4447@gmail.com                                          |
| 75 | DR. PALLAVI SHARMA   | piyapihusharma2010@gmail.com                                 |
| 76 | DR. PALLAVI SHARMA   | psharma3@ggn.amity.edu,<br>pallavipradeepsharma.27@gmail.com |
| 77 | DR. SHEETAL SHARMA   | sheetal4geography@gmail.com                                  |

|     |                      |                                                                                  |
|-----|----------------------|----------------------------------------------------------------------------------|
| 78  | DR. SREEJA M U       | <a href="mailto:dr.sreejaunni@gmail.com">dr.sreejaunni@gmail.com</a>             |
| 79  | DR.MUKESH KUMAR      | <a href="mailto:khushimann1208@gmail.com">khushimann1208@gmail.com</a>           |
| 80  | DR.NEHA ARORA        | <a href="mailto:kirtik7924@gmail.com">kirtik7924@gmail.com</a>                   |
| 81  | DR.SREEJA MU         | <a href="mailto:komalk0345.ku@gmail.com">komalk0345.ku@gmail.com</a>             |
| 82  | EMMANUEL REMRUOTMAWI | <a href="mailto:emmanuelremruotmawi@gmail.com">emmanuelremruotmawi@gmail.com</a> |
| 83  | FAIZA KAUSAR         | <a href="mailto:faizakausar826@gmail.com">faizakausar826@gmail.com</a>           |
| 84  | FATIMA AMIN          | <a href="mailto:kirtika432003@gmail.com">kirtika432003@gmail.com</a>             |
| 85  | FIRDOUS              | <a href="mailto:fsk63690@gmail.com">fsk63690@gmail.com</a>                       |
| 86  | FRANKLY SPEAKING     | <a href="mailto:seemajakhar55@gmail.com">seemajakhar55@gmail.com</a>             |
| 87  | GARGI CHOURASIYA     | <a href="mailto:gargichourasiya@gmail.com">gargichourasiya@gmail.com</a>         |
| 88  | GARIMA               | <a href="mailto:26garimamrig@gmail.com">26garimamrig@gmail.com</a>               |
| 89  | GARIMA               | <a href="mailto:lakshmib.dr@gmail.com">lakshmib.dr@gmail.com</a>                 |
| 90  | GAUTAM GAMBHIR       | <a href="mailto:gautamgambhir552004@gmail.com">gautamgambhir552004@gmail.com</a> |
| 91  | GEETANJALI BATTA     | <a href="mailto:geetanjaliбата2001@gmail.com">geetanjaliбата2001@gmail.com</a>   |
| 92  | GUEST 239            | <a href="mailto:mama_swain@hotmail.com">mama_swain@hotmail.com</a>               |
| 93  | HADIA                | <a href="mailto:hadiashaheen19@gmail.com">hadiashaheen19@gmail.com</a>           |
| 94  | HADIA SHAHEEN        | <a href="mailto:hadiashaheen19@gmail.com">hadiashaheen19@gmail.com</a>           |
| 95  | HARSHITA             | <a href="mailto:manasabolishetti63@gmail.com">manasabolishetti63@gmail.com</a>   |
| 96  | HARSHITA SHARMA      | <a href="mailto:jenamanaswini289@gmail.com">jenamanaswini289@gmail.com</a>       |
| 97  | HARSHITA YADAV       | <a href="mailto:harshita.y027@gmail.com">harshita.y027@gmail.com</a>             |
| 98  | HEENA                | <a href="mailto:himanshirana236@gmail.com">himanshirana236@gmail.com</a>         |
| 99  | HEENA RANI           | <a href="mailto:manoj61367@gmail.com">manoj61367@gmail.com</a>                   |
| 100 | HEMA TIWARI          | <a href="mailto:hematiwari7042@gmail.com">hematiwari7042@gmail.com</a>           |
| 101 | HEMLATA .            | <a href="mailto:hemlatasingh630@gmail.com">hemlatasingh630@gmail.com</a>         |
| 102 | HIMANI               | <a href="mailto:himanikataria163@gmail.com">himanikataria163@gmail.com</a>       |
| 103 | HRIDYA SHISHODIA     | <a href="mailto:hridyashishodia2209@gmail.com">hridyashishodia2209@gmail.com</a> |
| 104 | INDRA BANSAL         | <a href="mailto:muskanrathi781@gmail.com">muskanrathi781@gmail.com</a>           |
| 105 | ISHIKA GARG          | <a href="mailto:ishikagarg1412@gmail.com">ishikagarg1412@gmail.com</a>           |
| 106 | ISHIKA KAJLA         | <a href="mailto:ishmalik29@gmail.com">ishmalik29@gmail.com</a>                   |
| 107 | ISHIKA SINGH         | <a href="mailto:singhishika118@gmail.com">singhishika118@gmail.com</a>           |
| 108 | ISHITA SHARMA        | <a href="mailto:ishitashxrma@gmail.com">ishitashxrma@gmail.com</a>               |
| 109 | ITISHREE DASH        | <a href="mailto:lalamere21@gmail.com">lalamere21@gmail.com</a>                   |
| 110 | JAG MOHAN ARYA       | <a href="mailto:jagmohan@aditi.du.ac.in">jagmohan@aditi.du.ac.in</a>             |
| 111 | JAGRITI MANOCHA      | <a href="mailto:jagritimanocha72@gmail.com">jagritimanocha72@gmail.com</a>       |
| 112 | JANKI ANDHARIA       | <a href="mailto:nidhipandey96088@gmail.com">nidhipandey96088@gmail.com</a>       |
| 113 | JENNIFER DAS         | <a href="mailto:nidhiroy0777@gmail.com">nidhiroy0777@gmail.com</a>               |
| 114 | JERITO ZHIMO         | <a href="mailto:niharikagautam0497@gmail.com">niharikagautam0497@gmail.com</a>   |
| 115 | JYOTI                | <a href="mailto:pdniharika0911@gmail.com">pdniharika0911@gmail.com</a>           |
| 116 | JYOTI ABHYANKAR      | <a href="mailto:jyotiabhyankar@gmail.com">jyotiabhyankar@gmail.com</a>           |
| 117 | JYOTI ADURTY         | <a href="mailto:n46042061722@gmail.com">n46042061722@gmail.com</a>               |

|     |                      |                              |
|-----|----------------------|------------------------------|
| 118 | JYOTI KUMARI         | nityarao25@gmail.com         |
| 119 | KAJAL                | ppallaviaphale8@gmail.com    |
| 120 | KAJAL KUMARI         | kirtika432003@gmail.com      |
| 121 | KAJAL SHARMA         | paragkumar9540@gmail.com     |
| 122 | KAJAL                | rajputkajal671@gmail.com     |
| 123 | KAMINI KUMARI        | saurabhroy746@gmail.com      |
| 124 | KASHISH              | pooja.saroha255@gmail.com    |
| 125 | KAVITA NIMBALKAR     | poonam.bhardwaj@podar.org    |
| 126 | KHUSHBOO TIWARI 1456 | prateekshayadav339@gmail.com |
| 127 | KHUSHI               | itskhushi534@gmail.com       |
| 128 | KHUSHI KUMARI        | priitiyadav1521@gmail.com    |
| 129 | KHUSHI MANN          | khushimann1208@gmail.com     |
| 130 | KHUSHI.M             | tukulpriti@gmail.com         |
| 131 | KIRTI                | kirtik7924@gmail.com         |
| 132 | KM ZAHEEN            | zaheen21102001@gmail.com     |
| 133 | KOMAL                | Komalgjubilee@gmail.com      |
| 134 | KOMAL PANDEY         | komalk0345.ku@gmail.com      |
| 135 | KRISHMA              | krishmasingh9213@gmail.com   |
| 136 | KRITI SHARMA         | sharmapriyanshi984@gmail.com |
| 137 | KRITIKA              | anilg.gov.in@gmail.com       |
| 138 | KRITIKA ARORA        | nannuarora347@gmail.com      |
| 139 | KRITIKA KUMARI       | kirtika432003@gmail.com      |
| 140 | KRITIKA RATAWAL      | kritikaratawal2001@gmail.com |
| 141 | KUMARI SEEMA         | raajrahul147@gmail.com       |
| 142 | KUMKUM YADAV         | rajitramy200107@gmail.com    |
| 143 | KUNIKA               | singhkunika09@gmail.com      |
| 144 | KUSHUM KUMARI        | ranjani13devi@gmail.com      |
| 145 | LAKSHMI              | kaprilakshmi0212@gmail.com   |
| 146 | LAKSHMI BHATIA       | lakshmib.dr@gmail.com        |
| 147 | LUBNA S              | mksurya54321@gmail.com       |
| 148 | LUCKY SINDHU         | luckysindhu15@gmail.com      |
| 149 | M SURYA              | muntemba.rector79@gmail.com  |
| 150 | MAHIMA               | mahima7k6@gmail.com          |
| 151 | MALAVIKA DASARI      | reshunazereen10@gmail.com    |
| 152 | MAMATA SWAIN         | ridhisolanki9126@gmail.com   |
| 153 | MAMTA ARORA          | mamtaarora2@gmail.com        |
| 154 | MAMTA SHARMA         | ritambharaku@gmail.com       |
| 155 | MANASA BOLISHETTI    | kpratyush857@gmail.com       |
| 156 | MANASWINI JENA       | ritumandal2003@gmail.com     |
| 157 | MANISHA DASH         | riyapundir637@gmail.com      |

|     |                     |                                  |
|-----|---------------------|----------------------------------|
| 158 | MANJU DAHIYA        | manjudahiya1608@gmail.com        |
| 159 | MANNA RAI           | ruchisinghal362@gmail.com        |
| 160 | MANOJ KUMAR JHA     | manoj61367@gmail.com             |
| 161 | MANSI               | mansikumari5933@gmail.com        |
| 162 | MANU                | maanuji74@gmail.com              |
| 163 | RIA SINGH           | singhria475@gmail.com            |
| 164 | MD. SOHRAB ALI      | ali.md1016@gmail.com             |
| 165 | MEHA                | mehadheer16@gmail.com            |
| 166 | MEHAK PARASHAR      | parasharmehak21@gmail.com        |
| 167 | MENGUTSONUO LIEZ    | nsharmiladevi01@gmail.com        |
| 168 | MONALI GUPTA        | monaligupta480@gmail.com         |
| 169 | MONU MAHLAWAT       | mahlawatmonu6@gmail.com          |
| 170 | MOUSUMI             | mousumi160420@gmail.com          |
| 171 | MR.SUSHANT PAWAR    | events@billimoriahighschool.com  |
| 172 | MUSKAN              | muskanmuskan7754@gmail.com       |
| 173 | MUSKAN              | mksurya54321@gmail.com           |
| 174 | MUSKAN NIRMAN       | muskannirman47@gmail.com         |
| 175 | MUSKAN RATHI        | muskanrathi781@gmail.com         |
| 176 | MUSKAN SURYA        | mksurya54321@gmail.com           |
| 177 | NANDAKRISHNAN S     | gracyeve6@gmail.com              |
| 178 | NANDINI SINGH       | nandinisingh.kanpur.up@gmail.com |
| 179 | NAVYA NAGPAL        | navya.nagpal26@gmail.com         |
| 180 | NEETU MALIK         | malik.neetu77@gmail.com          |
| 181 | NEHA                | nnehu2502@gmail.com              |
| 182 | NEHA GAUTAM         | neha.gtm19@gmail.com             |
| 183 | NEILAKHONUO MERE    | lalamere21@gmail.com             |
| 184 | NIBHA KUMARI        | roynibha310@gmail.com            |
| 185 | NIDHI KUMARI        | nidhipandey96088@gmail.com       |
| 186 | NIHARIKA GAUTAM     | niharikagautam0497@gmail.com     |
| 187 | NIKITA RANI         | nikitarani4103@gmail.com         |
| 188 | NIKITA SINGH        | n46042061722@gmail.com           |
| 189 | NITYA RAO           | nityarao25@gmail.com             |
| 190 | PALLAVI SHARMA      | pallavistar2007@gmail.com        |
| 191 | PANKAJ KUMAR BANSAL | pankajkumarbansalgzb@gmail.com   |
| 192 | PARAG KUMAR         | paragkumar9540@gmail.com         |
| 193 | PARIDHI CHOUDHURY   | choudhuryparidhi2000@gmail.com   |
| 194 | PARUL BHATIA        | parulbhatia2021@gmail.com        |
| 195 | POOJA (POOJA)       | chopraop0868@gmail.com           |
| 196 | POOJA KUMARI        | saurabhroy746@gmail.com          |
| 197 | POOJA SAROHA        | pooja.saroha255@gmail.com        |

|     |                        |                               |
|-----|------------------------|-------------------------------|
| 198 | PREETI PARJAPATI       | parjapatipreeti89@gmail.com   |
| 199 | PRERNA                 | prernamirag@gmail.com         |
| 200 | PRERNA BHARTI          | prernabharti00@gmail.com      |
| 201 | PRERNA SHARMA          | sharma31prerna@gmail.com      |
| 202 | PRITI KUMARI           | tukulpriti@gmail.com          |
| 203 | PRIYA DAHIYA           | pd996887@gmail.com            |
| 204 | PRIYA SINGH            | priyarockstar2001@gmail.com   |
| 205 | PRIYA UPADHYAY         | priyaupadhyay2001@gmail.com   |
| 206 | PRIYADARSHINI          | ananyapandey1803@gmail.com    |
| 207 | PRIYANSHI DABAS        | dabaspriyanshi2@gmail.com     |
| 208 | PRIYANSHI SHARMA       | sharmapriyanshi984@gmail.com  |
| 209 | PROMILA SEHRAWAT       | prmlsehrawat@gmail.com        |
| 210 | PUJA MISHRA            | pujamishra14923@gmail.com     |
| 211 | PUNYATOYA PATRA        | punyatoyapatra@gmail.com      |
| 212 | PURNIMA TIWARI         | tiwaripurnima314@gmail.com    |
| 213 | PUSHPA PATIL           | pntpatil2006@gmail.com        |
| 214 | R.K VLOG               | rajmaitydwr@gmail.com         |
| 215 | RADHIKA                | mittal06.radhika@gmail.com    |
| 216 | RAHMATH BEEVI K        | beevi9875@gmail.com           |
| 217 | RAJVEER SINGH          | rajveersingh80001@gmail.com   |
| 218 | RAMESH P               | 2102079deepanshi@gmail.com    |
| 219 | RAVINA                 | shabdahiya919@gmail.com       |
| 220 | RAVINDRA REDDY M       | ravindraoudepts@gmail.com     |
| 221 | RAZDA                  | razdasaahi17@gmail.com        |
| 222 | RAZDA SAAHI            | razdasaahi17@gmail.com        |
| 223 | RIDDHI SOLANKI         | ridhisolanki9126@gmail.com    |
| 224 | REENA SUDARSHAN        | reenasudarshan84@gmail.com    |
| 225 | RESHMA NAZEREEN RESHMA | amsher.k@gmail.com            |
| 226 | RIDHI SOLANKI          | ridhisolanki9126@gmail.com    |
| 227 | RISESWAR PAYENG        | payengriseswar@gmail.com      |
| 228 | RISHITA GAUTAM         | srishug2730@gmail.com         |
| 229 | RITIKA                 | Dhikaritur@gmail.com          |
| 230 | RITIKA                 | kpratyush857@gmail.com        |
| 231 | RITIKA .K              | ritikak707@gmail.com          |
| 232 | RITIKA MANDAL          | ritumandal2003@gmail.com      |
| 233 | RITU                   | baroniaritu@gmail.com         |
| 234 | RIYA PUNDIR            | riyapundir637@gmail.com       |
| 235 | RIYA PUNDIR            | manishadash017@gmail.com      |
| 236 | RIYA RAJ               | riyaraj2306@gmail.com         |
| 237 | RIYA SINGH             | riyasinghkeepsmling@gmail.com |

|     |                       |                              |
|-----|-----------------------|------------------------------|
| 238 | RIYA SONI             | 2006pihu2006@gmail.com       |
| 239 | ROSHAN                | roshanvishvkarma1@gmail.com  |
| 240 | ROSHANI DEVI          | roshaniberi@gmail.com        |
| 241 | ROSHNI SINGH KUSHWAHA | roshnisingh86565@gmail.com   |
| 242 | RUCHI SINGHAL         | ruchisinghal362@gmail.com    |
| 243 | SAKSHI                | sakshijajoria69@gmail.com    |
| 244 | SAKSHI GUPTA          | sakshigupta00146@gmail.com   |
| 245 | SAKSHI BAGHEL         | sakshibaghel190@gmail.com    |
| 246 | SAKSHI GUPTA          | sakshigupta00146@gmail.com   |
| 247 | SAKSHI JAJORIA        | pooja.saroha255@gmail.com    |
| 248 | SAKSHI KUMARI         | tunnedwithsakshi02@gmail.com |
| 249 | SAKSHI PRIYA          | dr.rrchoudhary@hotmail.com   |
| 250 | SAKSHI PRIYA          | sakshi6803@gmail.com         |
| 251 | SAKSHI SHARMA         | Shrutiranjana29@gmail.com    |
| 252 | SAKSHI.B              | priyarockstar2001@gmail.com  |
| 253 | SAKSHI.K              | tunnedwithsakshi02@gmail.com |
| 254 | SALESSJAMES           | salesjames313@gmail.com      |
| 255 | SALESTEE              | ananyapandey1803@gmail.com   |
| 256 | SALONI ANAND          | salonianand307@gmail.com     |
| 257 | SALONI SINGH          | salonisingh9803@gmail.com    |
| 258 | SANA SINGH            | nsharmiladevi01@gmail.com    |
| 259 | SANDHYA SANDHYA       | www.sandhya309@gmail.com     |
| 260 | SANDY CANDY           | sandy786candy@gmail.com      |
| 261 | SANGAM PARASHAR       | sangamparashar333@gmail.com  |
| 262 | SANGEETA MANDAL       | sangeetamandal218@gmail.com  |
| 263 | SANJEEV GUPTA         | rajmaitydwr@gmail.com        |
| 264 | SANJEEV GUPTA         | fdpsanjeevpreeti@gmail.com   |
| 265 | SAPNA KUMARI          | sv892262@gmail.com           |
| 266 | SARITA SAHU           | saritakrisahu@gmail.com      |
| 267 | SARITA YADAV          | saritayadav02003@gmail.com   |
| 268 | SAYANIKA              | janhangchang@gmail.com       |
| 269 | SAYANIKA GOGOI        | janhangchang@gmail.com       |
| 270 | SEJAL DALAL           | sejal.dalal210793@gmail.com  |
| 271 | SHADAB KHAN           | shadab@aditi.du.ac.in        |
| 272 | SHAIK GRACY           | gracyeve6@gmail.com          |
| 273 | SHALINI SHAYRA        | fdpsanjeevpreeti@gmail.com   |
| 274 | SHALINI SINGH         | sanna.sanya@gmail.com        |
| 275 | SHALINI SINGH         | shayrathakur05@gmail.com     |
| 276 | SHALINI SUMAN         | shalinisuman25111@gmail.com  |
| 277 | SHARADA VINOD MENGALE | shayrathakur05@gmail.com     |

|     |                    |                                    |
|-----|--------------------|------------------------------------|
| 278 | SHATAKSHI SAH      | shatakshisah713@gmail.com          |
| 279 | SHEETAL SHARMA     | sheetal4geography@gmail.com        |
| 280 | SHERLIN            | Sherlinrachelsabu@gmail.com        |
| 281 | SHIKHA YADAV       | shikhayadav356@gmail.com           |
| 282 | SHILPI SARKAR      | simranshail07@gmail.com            |
| 283 | SHIVA RATHAUR      | rathaurshiva4889@gmail.com         |
| 284 | SHIVANI            | shivani.sol216@gmail.com           |
| 285 | SHIVANI            | shivanikamat2002@gmail.com         |
| 286 | SHIVANI CHAUDHARI  | shivanichaudhari20092002@gmail.com |
| 287 | SHIVANI CHAUHAN    | shivanichauhan982@gmail.com        |
| 288 | SHIVANI K          | suhaniraj664@gmail.com             |
| 289 | SHRADDHA SUMAN     | satendersingh987142@gmail.com      |
| 290 | SHRADHA            | swetarathor31@gmail.com            |
| 291 | SHREYA CHAUDHARY   | shreya14003chaudhary@gmail.com     |
| 292 | SHREYA SHARMA      | shreya.sharma4870@gmail.com        |
| 293 | SHRISHTI THAKUR    | thakurshrishti501@gmail.com        |
| 294 | SHWETA JOSHI       | 20shwetajoshi@gmail.com            |
| 295 | SHWETA MARBATE     | shweta.marbate@podar.org           |
| 296 | SHWETA SINGH       | shwetasingh05092002@gmail.com      |
| 297 | SIMRAN SAHU        | simransahu8887@gmail.com           |
| 298 | SIMRAN GUPTA       | simrangupta288@gmail.com           |
| 299 | SIMRAN SAHU        | simran.sahu0710@gmail.com          |
| 300 | SIMRAN SEHRAWAT    | simransehrawat234@gmail.com        |
| 301 | SIMRAN SHAIL       | simranshail07@gmail.com            |
| 302 | SIMRAN VERMA       | simran.verma0805@gmail.com         |
| 303 | SINGAMAYUM MARJINA | Singamayummarjina@gmail.com        |
| 304 | SMRITI PANDEY      | pandeysmriti335@gmail.com          |
| 305 | SNEH GANGWAR       | sneh_geo2005@yahoo.co.in           |
| 306 | SNEHA              | dadhichsneha8@gmail.com            |
| 307 | SNEHA KHATAK       | snehakhatak1@gmail.com             |
| 308 | SNEHA VYAS         | dadhichsneha8@gmail.com            |
| 309 | SONI KUMARI        | s.aggarwal1263@gmail.com           |
| 310 | SONIA              | ranasonia522002@gmail.com          |
| 311 | SRISHTI MEHTA      | srishtimehta039@gmail.com          |
| 312 | STUTI              | stutirkm@gmail.com                 |
| 313 | SUGANDHA GANGULY   | sugandhaganguly00@gmail.com        |
| 314 | SUHANI KUMARI      | suhaniraj664@gmail.com             |
| 315 | SUHANI RAJ         | suhaniraj664@gmail.com             |
| 316 | SUHANI SHARMA      | 1902suhanisharma@gmail.com         |
| 317 | SUKUMAR P          | psukumar@hpcl.in                   |

|     |                       |                                 |
|-----|-----------------------|---------------------------------|
| 318 | SUMAN KUMARI          | satenderkushwaha939@gmail.com   |
| 319 | SUMEDHA CHATTERJEE    | sumedhachatterjee1505@gmail.com |
| 320 | SUNIL BHAKRI          | sunilmarutibhakri@gmail.com     |
| 321 | SUNITA KUMARI         | sunitakumari216396@gmail.com    |
| 322 | SUNITARANI SAHOO      | sunitaranisahoo111@gmail.com    |
| 323 | SURUTI                | Shrutisingh050503@gmail.com     |
| 324 | SWALIHA SAJEEM        | swalihhasajeem@gmail.com        |
| 325 | SWARNA KAPIL          | swarnakapil23@gmail.com         |
| 326 | SWATI                 | gautamswati848@gmail.com        |
| 327 | SWATI AWASTHI         | swati.awasthi.127@gmail.com     |
| 328 | SWEETY ROY            | sweetyroym2410@gmail.com        |
| 329 | SWETA RATHORE         | swetarathor31@gmail.com         |
| 330 | TAMANNA BANSAL        | bansaltamanna6@gmail.com        |
| 331 | TANUSHREE MISHRA      | tanushreemishra0901@gmail.com   |
| 332 | TANVI AGGARWAL        | Aggarwaltanvi04@gmail.com       |
| 333 | TANYA CHADHA          | tanyachadha02@gmail.com         |
| 334 | TRIPTI SALONI 1568    | triptisalonim948@gmail.com      |
| 335 | TRISHA                | trishakerketa@gmail.com         |
| 336 | SUMEDHA DABAS         | sumedhadabas2@gmail.com         |
| 337 | VANEE ADLEENA TANDON  | vaneeads.tan@gmail.com          |
| 338 | VARSHA DAHIYA         | varshadahiya2002@gmail.com      |
| 339 | VIDYA GUPTA           | vidyagupta886@gmail.com         |
| 340 | VIRENDRAKUMAR THAKKAR | virendrakumarthakkar@gmail.com  |
| 341 | YAMYA SHISHODIA       | shishodiayamya@gmail.com        |
| 342 | YASH RANJAN           | ysrivastava73@gmail.com         |
| 343 | YUKTI                 | yuktibhardwaj2021@gmail.com     |