

Practical Action Nepal

Community Based Disaster Management with focus on Early Warning System



Gehendra Gurung



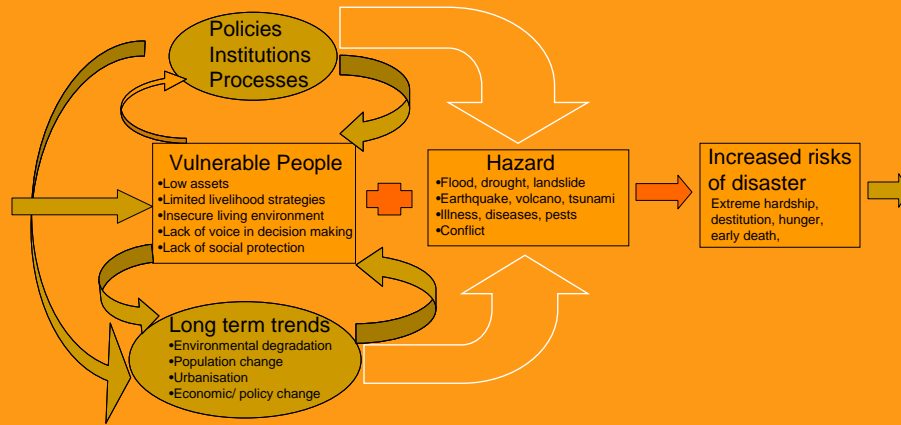
Brief history in Nepal

- 1966 – ITDG (now - Practical Action) founded in the UK as a Charity Organisation
- 1979 – Began working in Nepal in micro-hydro sector
- 1991 – Established Programme Office in Nepal
- 1998 – Established Country Office and expanded operations to encompass three main areas: Energy, Transport and Agro-processing
- 2004 - 2008 Country Strategy based on Group Strategy 2002 - 2006

Gehendra Gurung



Vulnerability framework



Gehendra Gurung



Reducing vulnerability



Gehendra Gurung

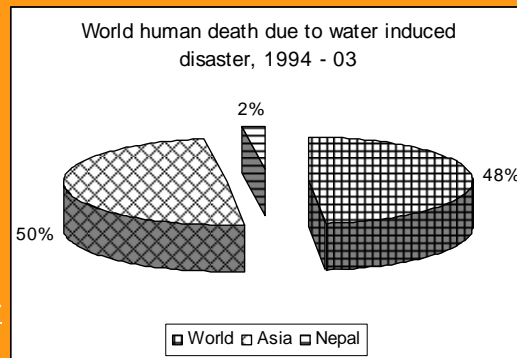


Disaster management

Major hazards in Nepal

- Earthquakes
- Epidemics
- Fires
- Floods
- Landslides

Practical Action Nepal focuses on Water Related Disaster with Early Warning System



Gehendra Gurung



Strengthening early warning system

Hardware activities

- Early warning towers
- Emergency shelters
- River crossing bridges
- Boats and life jackets
- River bank protection



Software activities

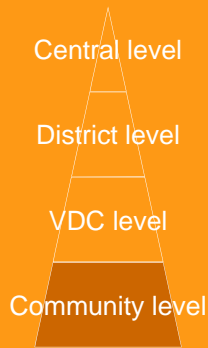
- Awareness and education
- Capacity development
- Coordination and cooperation



Gehendra Gurung



Lesson 1: Linkage between different levels of committees



Periodic plans need to reflect community needs for disaster management (vertical)

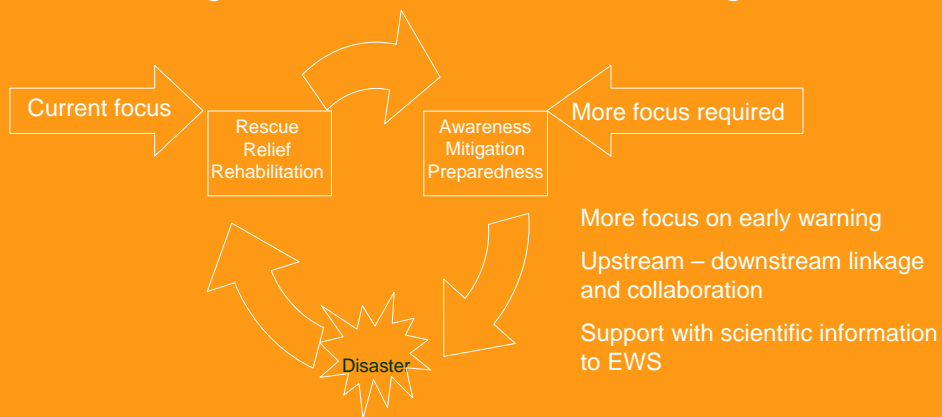
Linkage and coordination between communities and service providers need to strengthen (horizontal)

Grass-roots CBOs and their networking needs elaboration

Gehendra Gurung



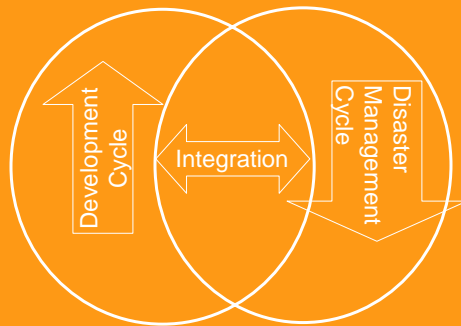
Lesson 2: Current legislative focus in disaster management



Gehendra Gurung



Lesson 3: Integrating between disaster and development cycles



- For the communities in disaster prone areas – disaster is a part and partial of life
- Disaster management activity helps improve livelihood and development
- Development activity helps reduce disaster risks

Gehendra Gurung



Thank you



Gehendra Gurung

